



OL PEJETA ESCAPES
CONSERVANCY
KENYA

PELICAN HOUSE FACTSHEET

Pelican House is a beautiful, thatched, exclusive accommodation nestled in the heart of Ol Pejeta Conservancy, that overlooks the serene Pelican Dam. It offers a unique blend of modern living and immersive wildlife experiences, with the option of self-catering or all-inclusive catering. Whether you are indulging in gourmet dining, observing wildlife or simply relaxing in style, Pelican House promises an unforgettable journey into the heart of Ol Pejeta's captivating beauty.

NO. OF BEDS:

The house sleeps 6 people in the main house and 2 in the double suite which is separate to the main house with its own bathroom. The main house has two large en-suite double rooms and a third double bedroom with a separate bathroom. 4 extra beds are available on request.

CHECK - IN: 1:00 pm on the date of arrival

CHECK-OUT: 10:00 am on the date of departure

KITCHEN:

The house kitchen is fully equipped with a gas cooker, a fridge, a freezer, cutleries and crockeries for 12 people, cool bags and chairs for sundowners. The house kitchen is open plan to the living room and a separate 'canvas enclosed' veranda for outside dining or bar area in the living room for casual dining. The house also has a separate staff kitchen and laundry area.

DINING / LIVING ROOM:

Open plan living and dining room with a fireplace within the main house. There are two outdoor verandas, one under cover used as a second dining area, and a wooden deck furnished with outdoor lounge chairs.

ELECTRICITY:

Electricity is available throughout the day, as our electricity is solar-charged.

INTERNET:

Telephone reception is limited at Pelican House but there is free Wi-Fi available when the electricity is on.

GETTING THERE:

BY ROAD: About 3 and a half hours drive from Nairobi

BY PLANE: 1 hour drive from the Nanyuki Airstrip

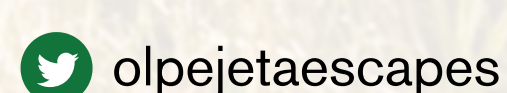
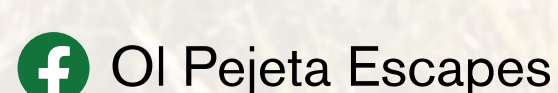
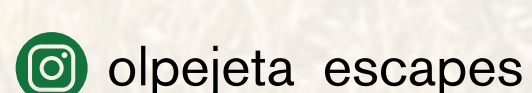
GENERAL INFORMATION:

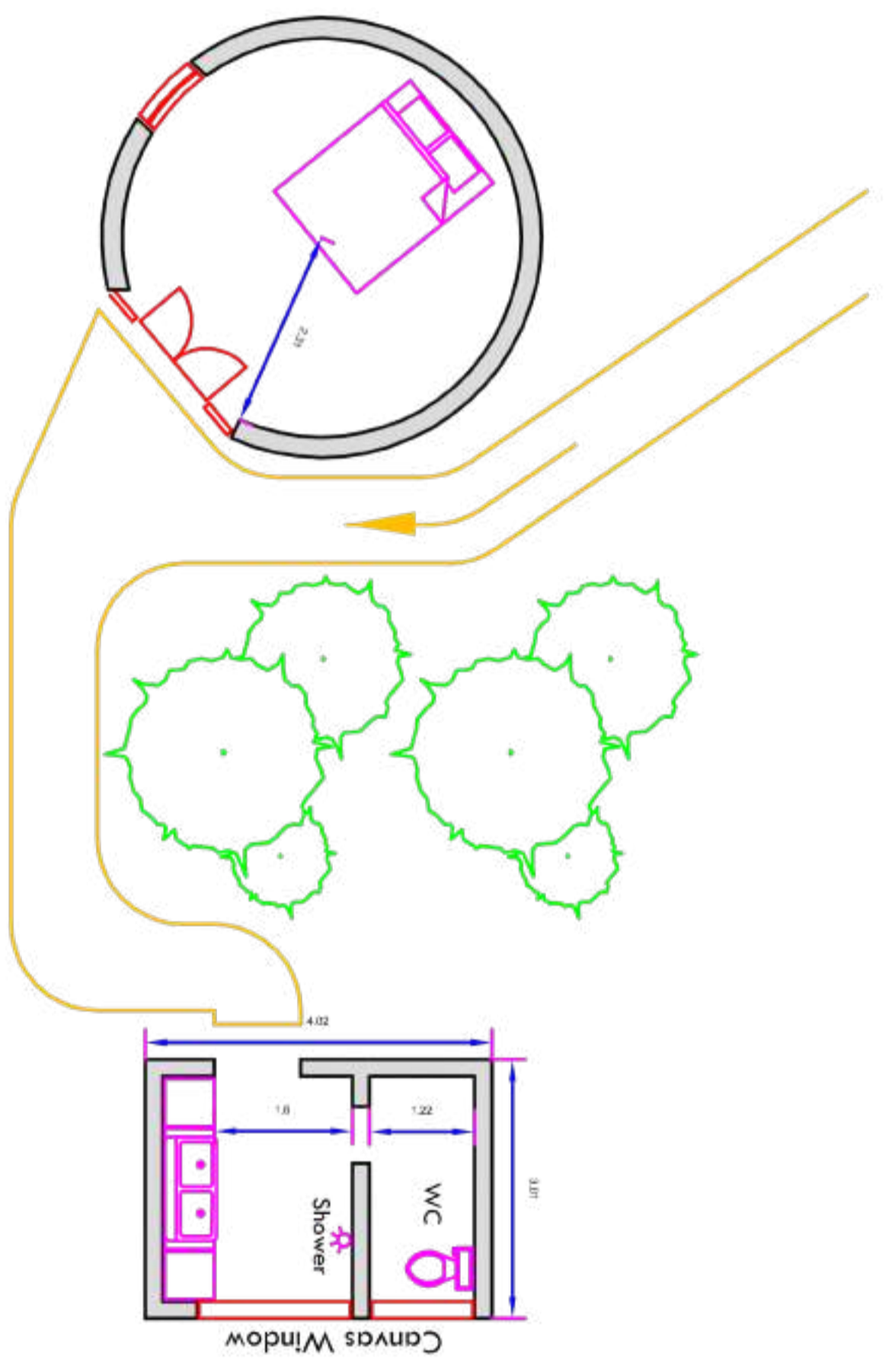
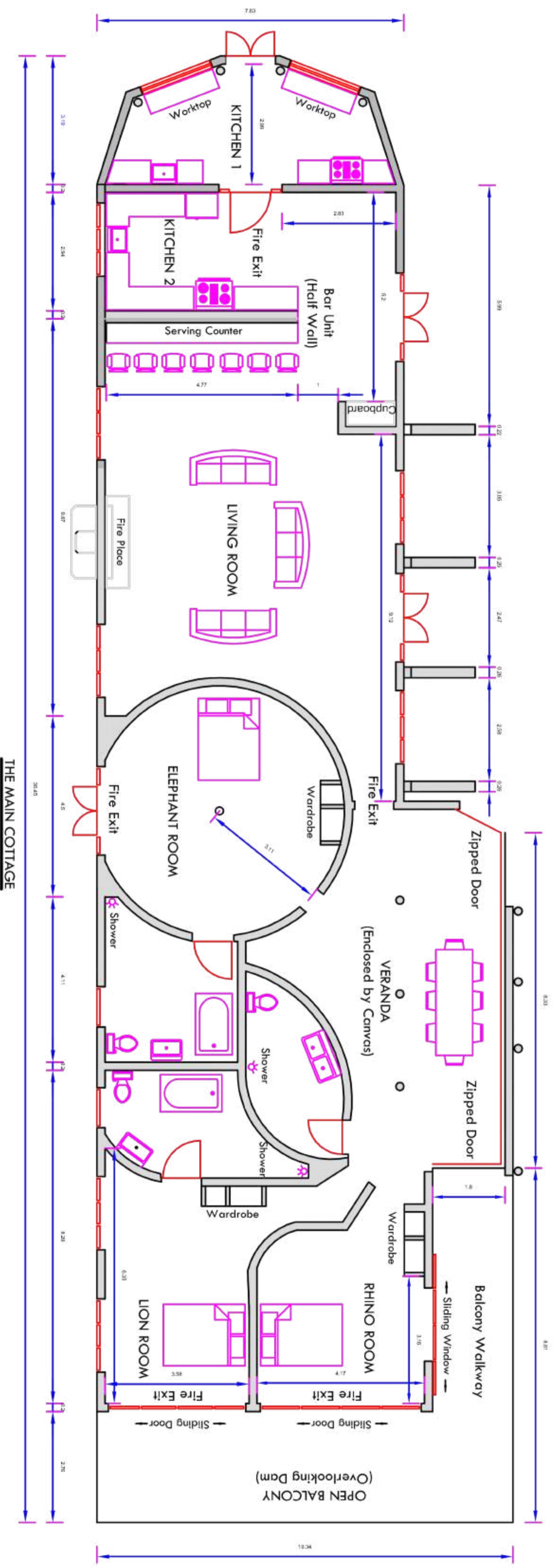
- Caretakers live on-site and are there to cater to your daily needs. Staff members include a housekeeper, a kitchen assistant, a groundskeeper, and a night watchman. Members of staff work 8 hours a day, with reasonable break times.
- Bedding and towels are freshly laundered and provided at no extra charge.
- Electricity and hot water are provided.
- Boiled and filtered drinking water will be provided.
- No pets allowed.
- There is driver's accommodation.
- Please note that night game drives are only permitted in the company of accredited Ol Pejeta staff. Private vehicles are not permitted on night game drives whilst unaccompanied.

The following is **NOT** included in your rental:

- Ol Pejeta Conservancy entrance fees and optional Conservation Activities. Please refer to our website for the current tariff.
- All food and drinks. There is Chandarana supermarket in Nanyuki located at Cedar Mall, in case you need to do any supply shopping.
- Staff gratuities. Please be aware that if you request staff to work over their standard 8 hours, we request that you ensure that this overtime is acknowledged in your tip.
- Mosquito repellents and insect spray.
- Washing-up liquid, washing powder/fabric conditioner, bleach and toiletries for personal use.
- The chef is available on request at a cost.

Follow Us:





Notes
 1. All the dimensions are in metres
 2. Not to scale